



03 February 2026

Joint Nordic-Baltic Certification Scheme for the EUDI Wallet

Mogens Rom Andersen
Lead Architect, Danish Agency for Digital Government

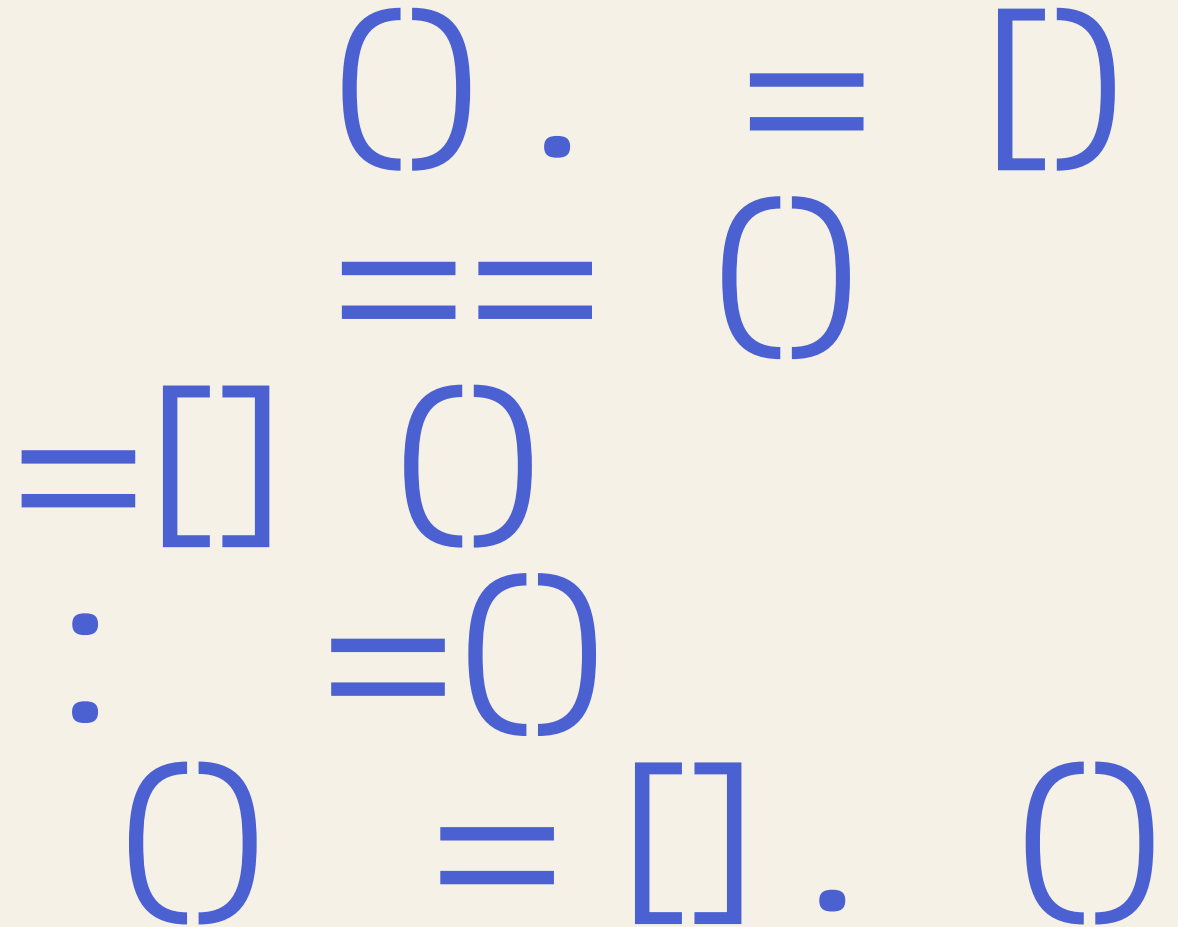
Agenda

EUDI Wallet (EUDIW) certification

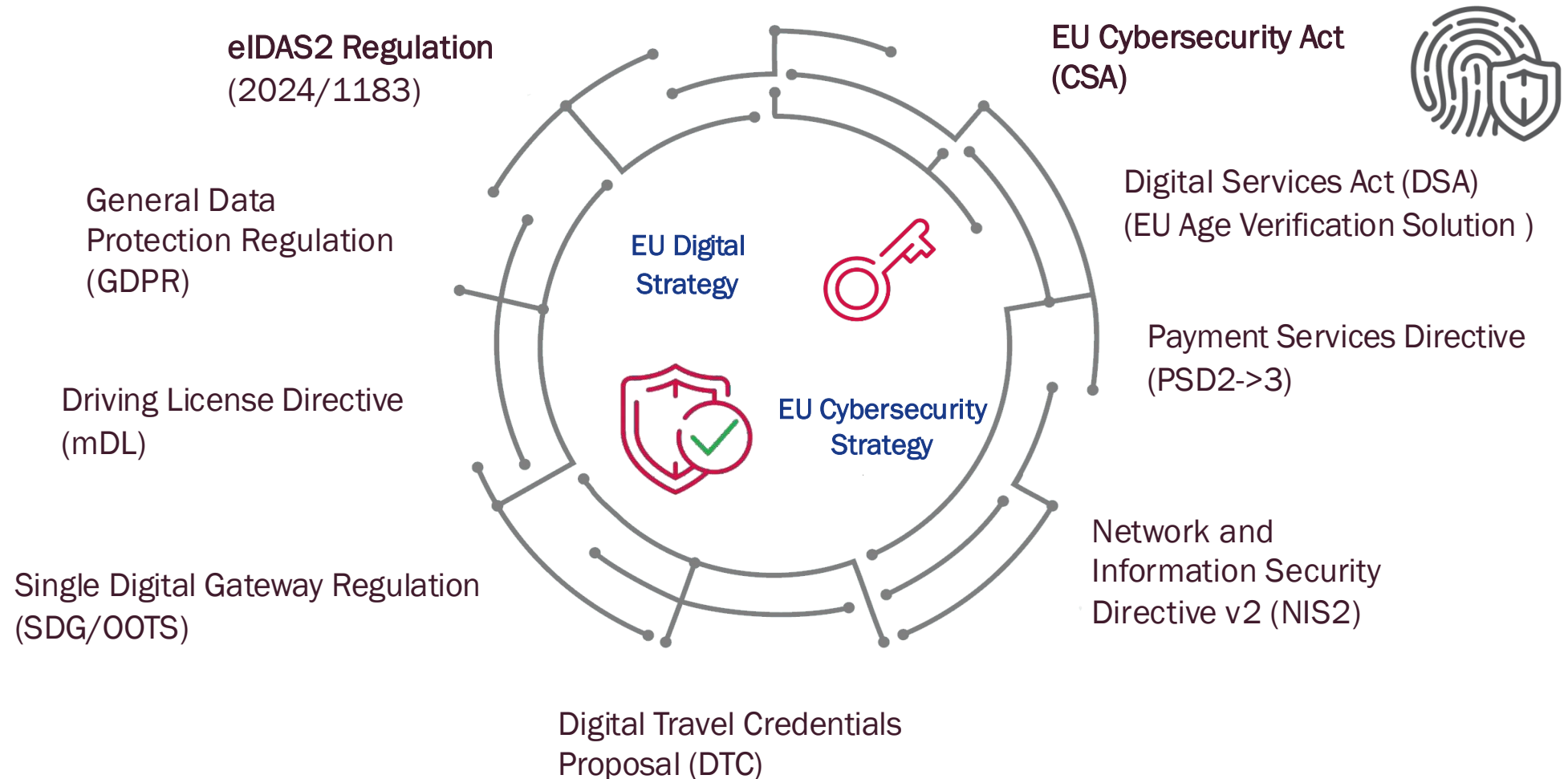
- Elements
- Timeline
- Challenges

Nordic-Baltic Common Certification Scheme (NOBCCS)

- Objectives
- Status
- Challenges



EUDIW LANDSCAPE - EU LEGISLATION



EUDIW Certification

Scope

- Legislation - Article 5c of 2024/1183
 - CIR (IA) 2024/2981
 - EUCC conformance - CIR 2024/482
- Interoperable wallet solutions
- Cybersecurity and privacy requirements conformance
- Facilitate trust across borders for relying parties and end-users
- Timeline: All MS to deliver a least one certified EUDIW by 24/12-2026 – Certification and conformance evaluation takes time!

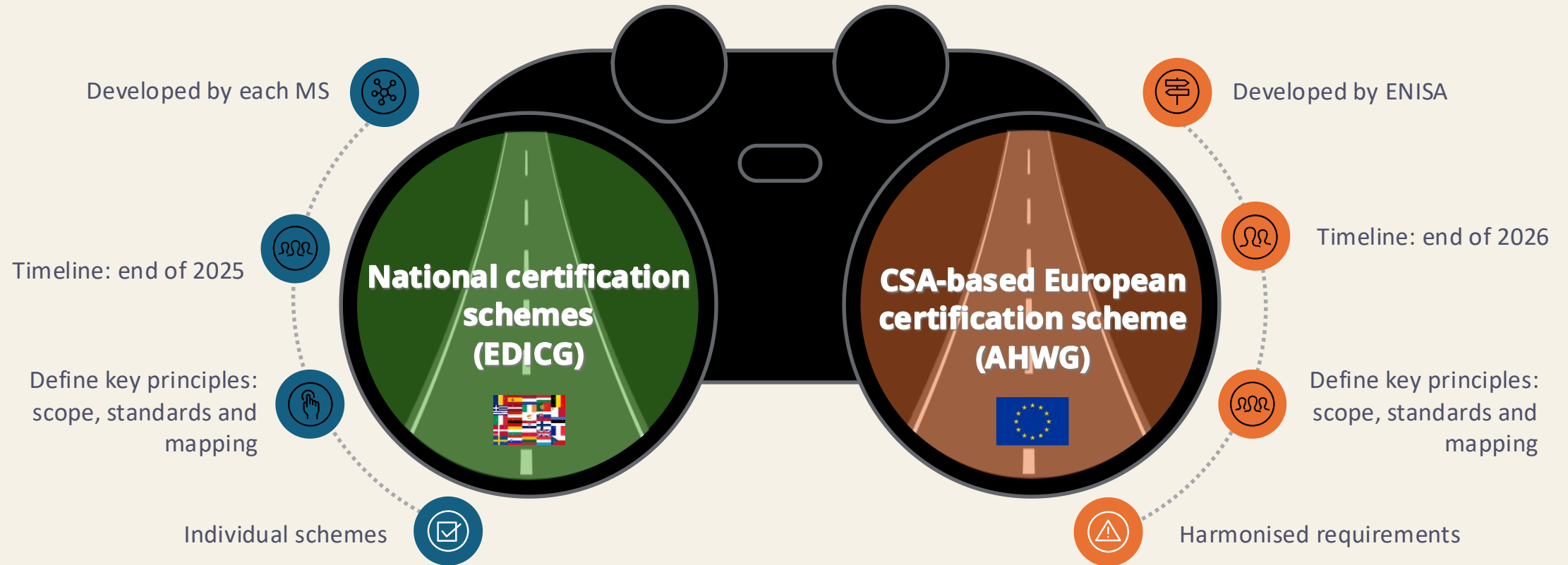
Challenges

- Non-certifiable elements
 - Usability
 - Non-technical security, e.g. phishing and social engineering
 - Privacy?
- Certification schemes and conformance evaluation schemes required, but not completed (details in bonus slide 1)
- Standards required for evaluation schemes missing in some areas
- Moving target as Architecture Reference Framework (ARF) and CIRs not yet completed
- Many stakeholders (details in bonus slide 2)

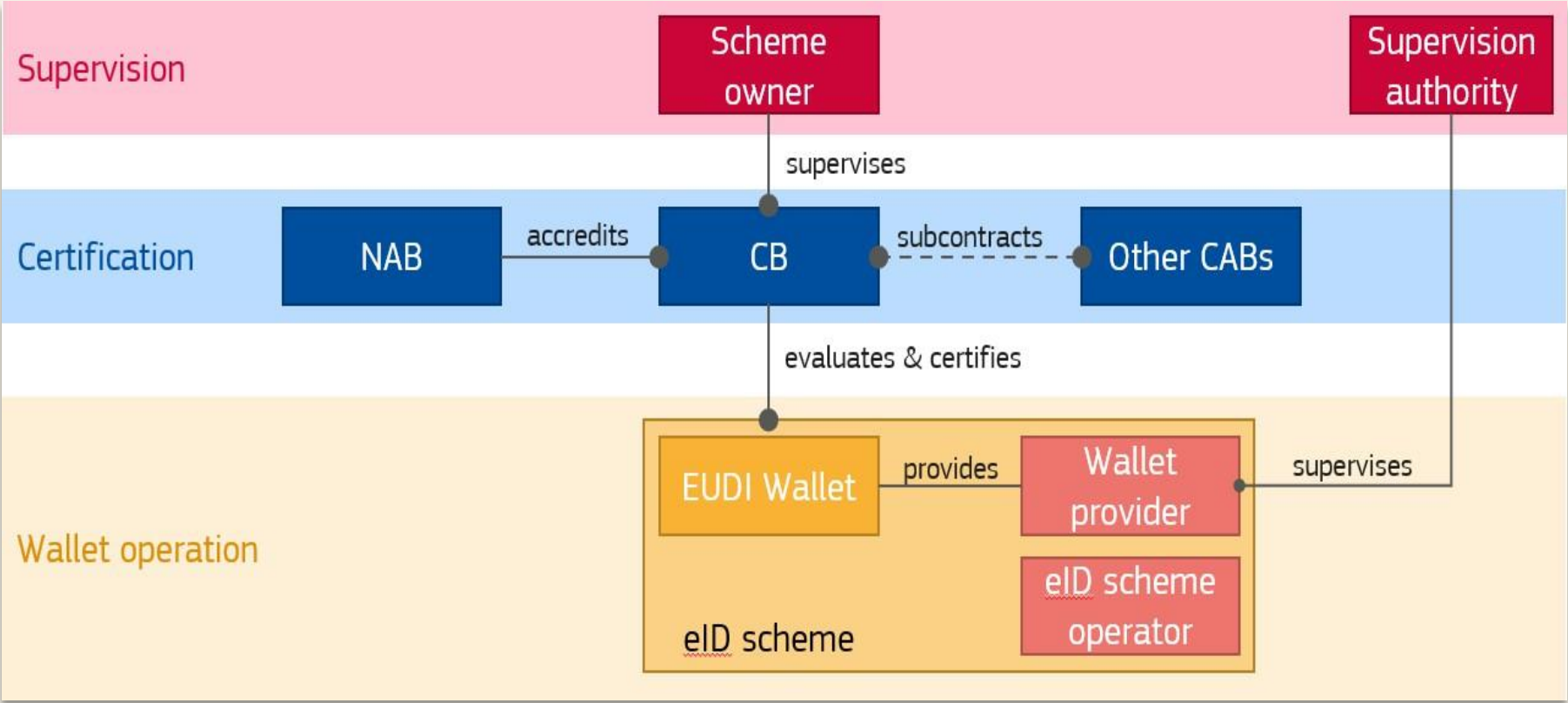
(European Commission)

Certification approach

There are two parallel tracks in certification, with many of the same challenges and questions to address.



Certification roles ecosystem



The needs and goal for NOBCSS

Why

- Complex EUDIW solutions leads to complex EUDIW certification scheme
- Very resource demanding to create national certification schemes
- Very limited existing certification and conformance evaluation bodies in NOBID countries

Goal

Common EUDIW certificate scheme
- to the extent possible

NOBCSS Plan and Deliverables



2025 → March 2026

- Investigate and create a common understanding on the applicability and boundary conditions allowing for a common certification scheme.
- Study of responsibilities related to accreditations, conformity assessment bodies and certification schemes
- Study and definition of common certification scheme profiles that meets the requirements of the revised regulation and the implementing acts.
- Stakeholder and communication plan activities with conformity assessment bodies and wallet solution providers.
- Accreditation and certification implementation plan for 2026.
- Approval and notification of the certification scheme in the Member States and EDICG.



End of 2026

- Completion of accreditations and certifications together with conformity assessment bodies and wallet solution providers in applicable countries – to the extent this is doable.
- Plan for transition from national certification schemes to EUCC.
- Final project report and recommendations for further actions.

NOBCSS Status and Challenges

Status

- DK, EE, FI, HR, IS, LT, LV, SE
- NOBCSS working closely with BE, DE, FR, ES, NL - informal working group
- Potentially consolidate work into upcoming EUDIW certification consortium. (DIGITAL-2025-BESTUSE-TECH-09-WALLET - Support to the development and certification of EU Digital Identity Wallets)
- AT currently only MS with notified certification scheme in EDICG
-
- National wallets emerging without certification in some MS

Challenges

- Timing, timing, timing.
- Parallel solution and certification scheme development
- EAL4, AVA-VAN 5 required due to assurance level high requirements for cross border authentication with EUDIW
- Different wallet architecture and eID schemes in NOBID countries implies different certification schemes

Bonus slides



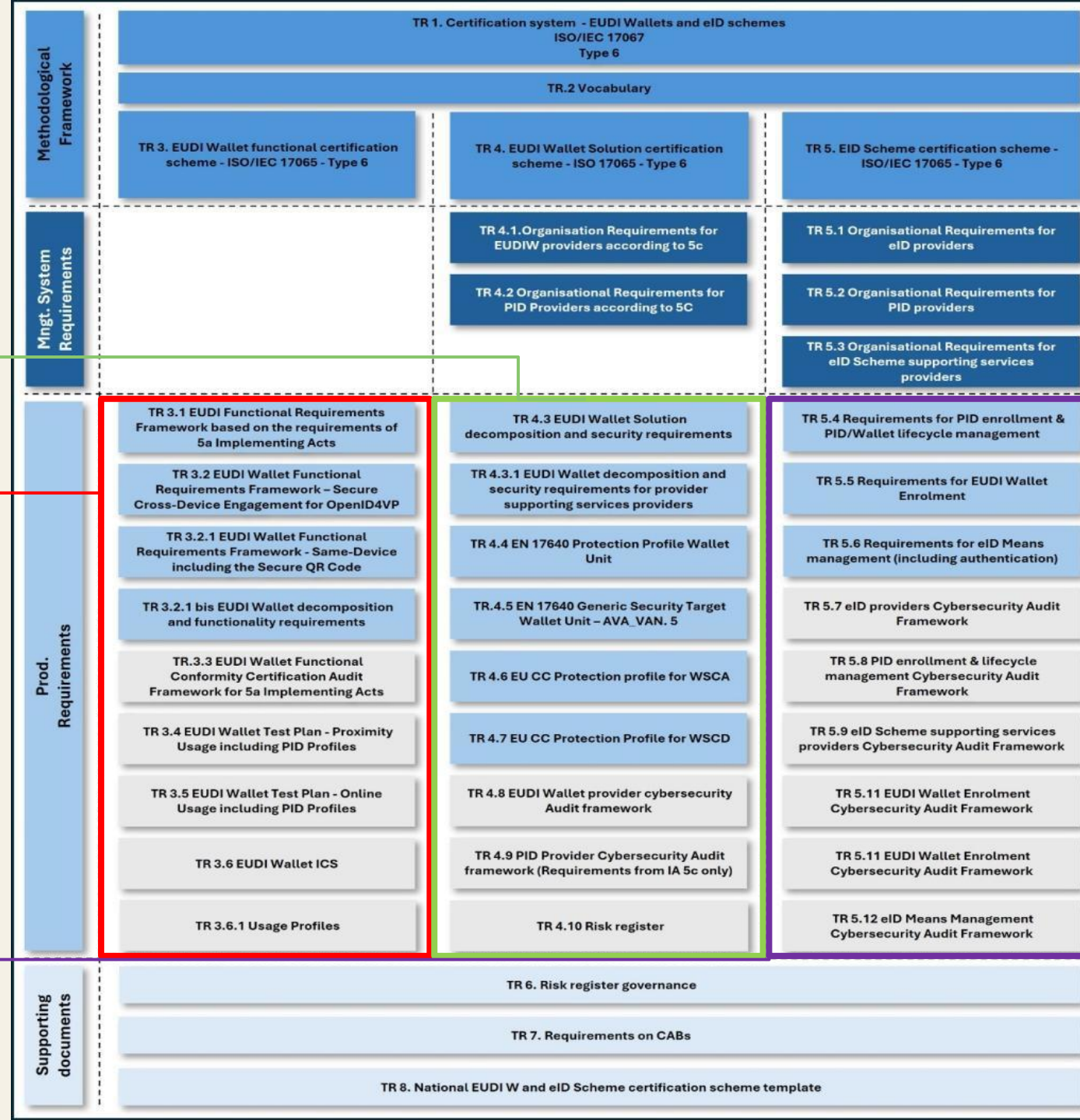
(France Identité, TR1. Certification System EUDI Wallets & eID schemes)

Certification Breakdown Example (the scary slide)

Cybersecurity certification

Functional/interoperability
certification

eID Scheme certification





MANY STAKEHOLDERS INVOLVED

Commission

- Implementing Acts
- ARF

ESOs (CEN, ETSI)

- Requirement standards
- Methodology standards

Member States

- National EUDI schemes
- Other national schemes

CABs

- Labs and CBs for component
- Labs and CBs for “main” certificate

Vendors

- Wallet developers/providers
- Component developers/providers

ENISA communities

- EUDIW Ad Hoc Working Group
- EUCC maintenance group